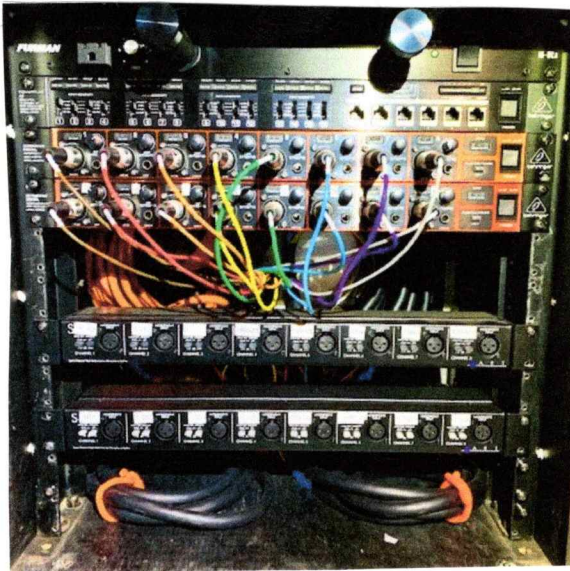


TRINITY/STYX X BEHRINGER MONITOR SYSTEM

Trinity/Styx X uses a Behringer Power Play 16 Monitor system on stage. Each player has their own personal monitor mixer for their in ear mixes. This system uses 2 ART S8 signal splitter to send one signal to the Behringer system and the other signal to a 16 channel (20ft) snake to connect to the venues stage/house snake. Vocal mics, electric/acoustic guitars, bass, keyboards, backing tracks, click track & 3 drum mics are routed into the inputs of the ART S8 splitter units.

** The remaining drum mics can be run directly into the house system as they are not needed in our Behringer system.

** The 2 keyboard signals are sent directly to the house via 2 DI boxes bypassing the Behringer system. The keyboardist uses a separate aux send from his mixer to route the keyboards into the Behringer system. This allows the house to have volume control of the 2 keyboards individually. With this system employed, the singer needs no wedge mix while the musicians need only minor wedge mixes.



Behringer Power Play Units

ART S8 Splitter Units